



Lighting Design Studio

Often projects require fixtures unique to the space, with respect to appearance, scale, material, and other factors. Manufacturers typically only “stock” a very limited amount of product lines that are more for the mass market, so custom or modified lighting fixtures are needed to fulfill the design requirements. Terry Bell, President and Principal Designer for CTG, has been actively doing lighting design for over 20 years, and with a background in engineering/manufacturing processes, he understands the process of fabrication, as well as having a creative talent for each application.



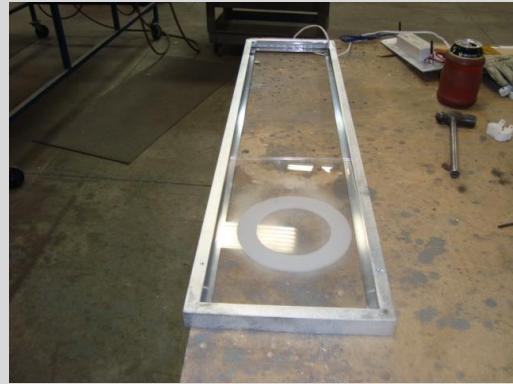
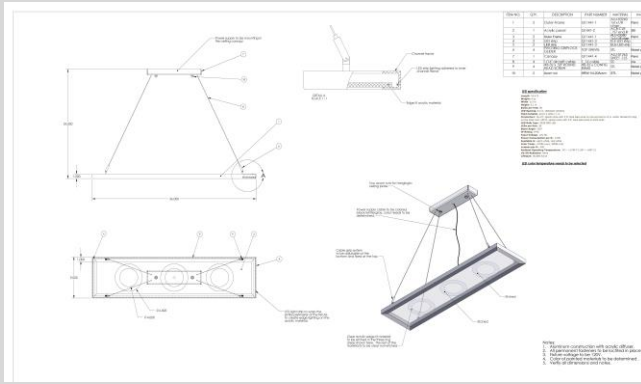
Custom pendant fixtures were desired for the renovation of Northpoint Mall Food Court. Terry worked closely with the design team at Schroeder Slater and the manufacturer to create unique, contemporary pieces to fill the space. The light fixtures were fitted with all the same compact fluorescent lamps for maintenance concerns, and fabricated with aluminum and hand painted acrylic with respect to the structural support requirements. Each pendant measure roughly 10’ in diameter by almost 3’ high. Access to the lamps and ballasts is through removable top panels.



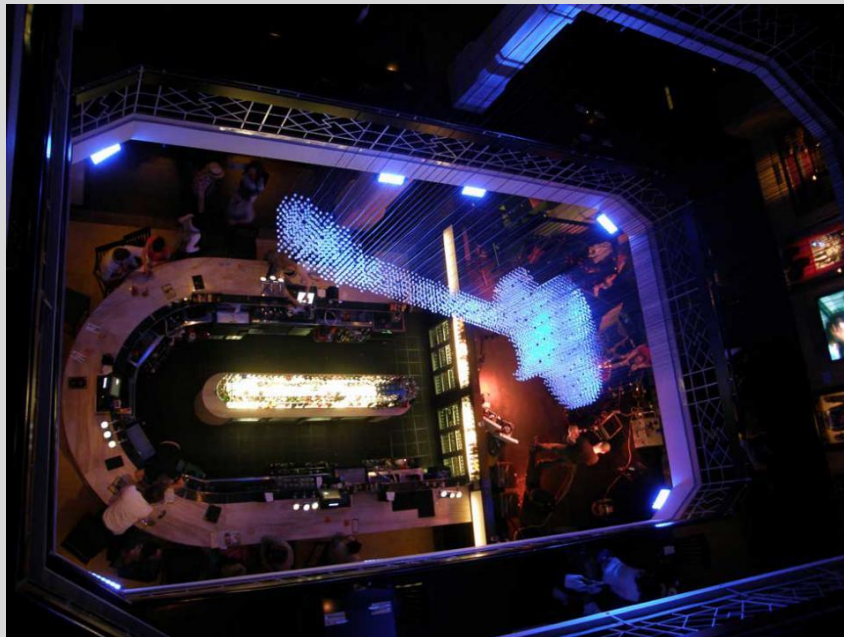
For Polaris Mall, custom pendants, ceiling fixtures and pier mount “lamps” were desired to create an upscale look. Terry designed each fixture in collaboration with the architect (KA). The largest bowl pendant (pictured here) is actually 16’ in diameter, and features hand painted faux alabaster diffusers. Mounting weight and tension at each of four cable supports was provided to the team structural engineer to include any additional requirements for mounting. These pendants were also designed to arrive in four sections so they would fit through service doors and aid in the initial installation.



Taking an older design and introducing new technology is a natural direction for Terry. For Cumberland Mall, the original design had incandescent lamps on stems. In keeping with the architectural (TVS&A) intent, Terry created LED modules with an acrylic sphere at each end. The concept was eventually turned into a standard product offering by the manufacturer.



For the new exhibit at The Country Music Hall of Fame, a unique pendant was desired for one of the interactive spaces. Concepts sketches were developed, one was selected, and factory drawings were created for team review and approval. During fabrication, actual product photographs are provided throughout the process. For large scale installations, often the project design team will visit the factory to review the construction or components of the fixtures prior to final assembly.



For the Hard Rock Café, in Prague, a “floating” chandelier was envisioned to hang between three levels of the bar. Borrowing from an earlier concept of LED modules created for another project, Terry created faceted acrylic spheres (over 300 here) to hang between over 1000 crystal spheres, to create the floating guitar shaped chandelier, over 16’ long. The entire piece was fabricated in the U.S., designed to be hung on site with tabbed supports, for almost half the cost originally provided by other manufacturers in Europe. The project ultimately was awarded an international lighting design award for unique and creative use of LED’s.